

AVAILABLE Q4 2019

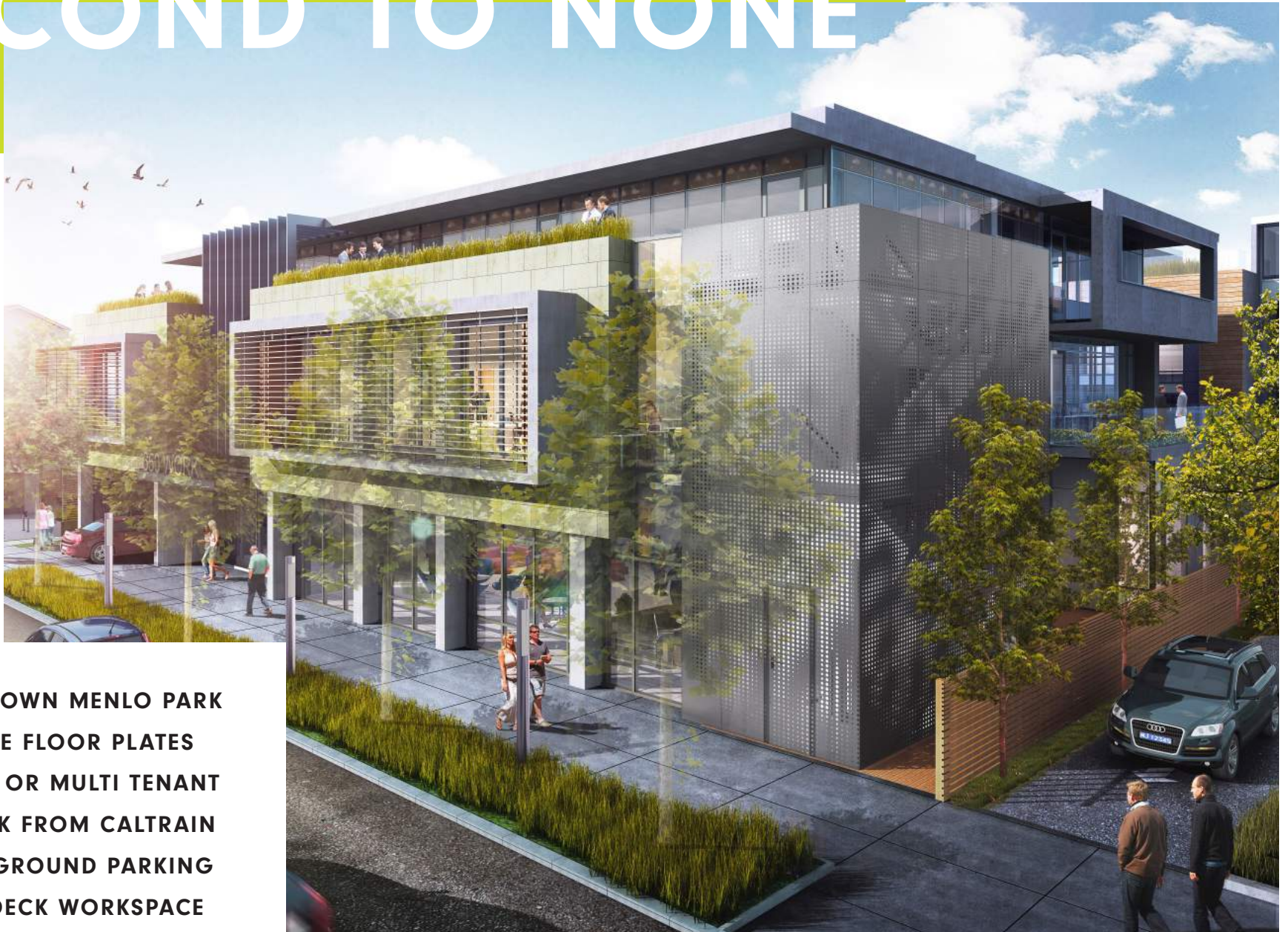
SIX 50

DWNTWN 650 LIVE OAK
MENLO PARK



FIRST TO MARKET, SECOND TO NONE

±25,420 SF
CLASS A+ OFFICE



- DOWNTOWN MENLO PARK
- FLEXIBLE FLOOR PLATES
- SINGLE OR MULTI TENANT
- 1 BLOCK FROM CALTRAIN
- UNDERGROUND PARKING
- ROOF DECK WORKSPACE



**SIX
50
LIVE**

THE BOLD NEW LOOK FOR MENLO PARK

With its modern design, soaring ceilings, and California inspired indoor-outdoor environments, SIX50LIVE is styled for the whole team.

CALIFORNIA - INSPIRED WORKSPACE



EFFICIENT OUTDOOR ENVIRONMENTS BUILT FOR WORK, COLLABORATION + PLAY
OPERABLE WINDOWS + WALLS FOR FRESH AIR
PANORAMIC VIEWS OF SILICON VALLEY

SIXE 50LIVE



SUBURBAN LATITUDE URBAN ATTITUDE

LIVING GREEN WALLS
SUSTAINABLE MATERIALS
BRILLIANT GLASS

LEED GOLD
SOLAR PV READY
BIKE STORAGE

ELECTRIC VEHICLE CHARGING
COMMUNITY PARK
ENTERTAINING AREAS

**SIX
50
LIVE**

**DOWNTOWN
MENLO PARK**

EL CAMINO REAL

←
SAN JOSE
±35 MIN VIA BULLET



MENLO PARK STATION

→
SAN FRANCISCO
±37 MIN VIA BULLET

ARRIVE IN
ANY STYLE

SIX
50
LIVE



HELLO MENLO PARK

BBC
PARK JAMES
CAMPER
MADMOSIELLE COLETTE
COFFEEBAR
KEPLERS
BORONE
AMICIS
MAMA COCO
THE GUILD THEATRE
KEPLERS BOOKS
TRADER JOES
SAFEWAY
DRAEGERS
PEETS
STARBUCKS
COLD STONE
POSH BAGEL

+MORE

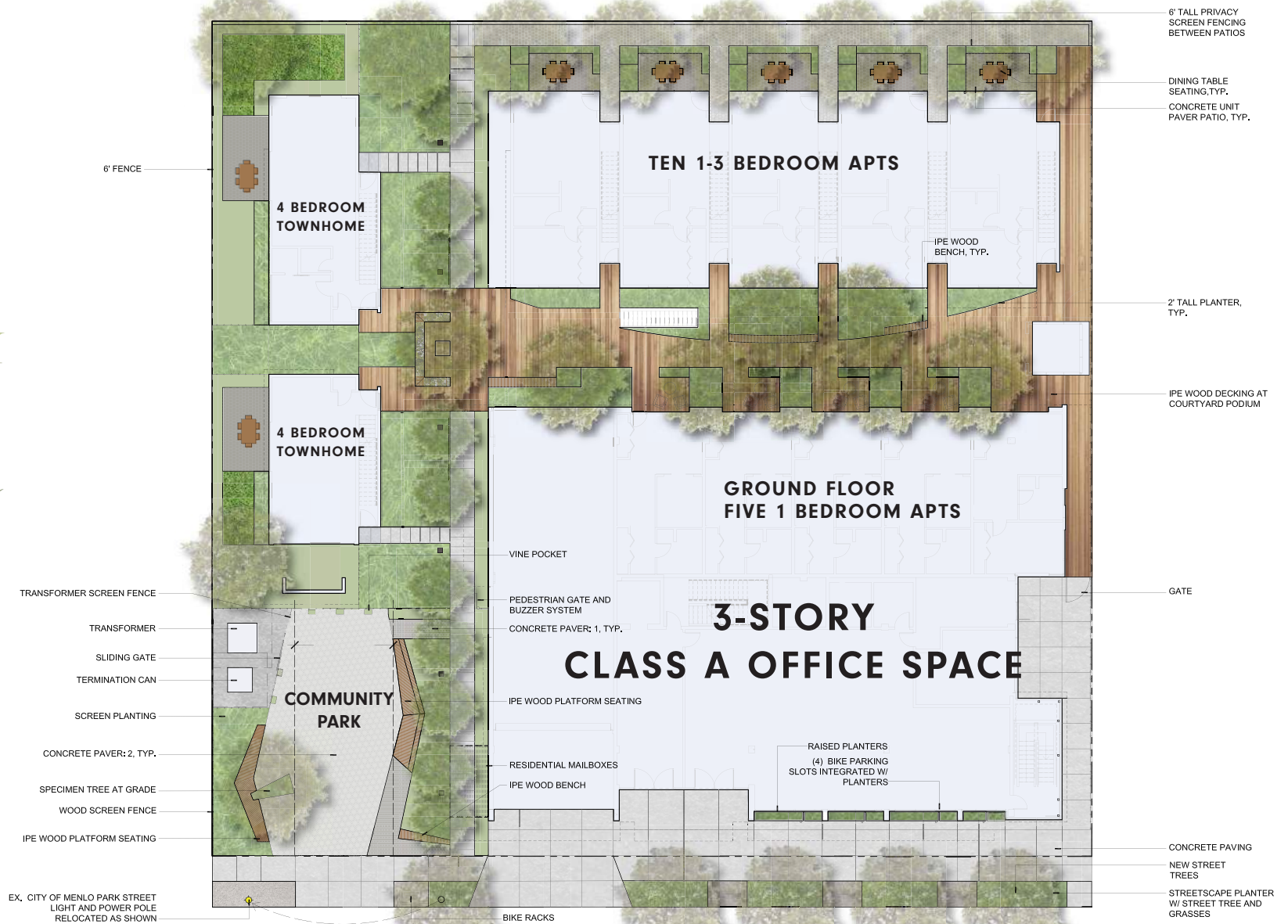
STANFORD MALL 1.25 MILES
PALO ALTO 1.3 MILES
REDWOOD CITY 4 MILES



SILICON VALLEY - AT YOUR DOORSTEP



SITE PLAN



FLOORPLANS

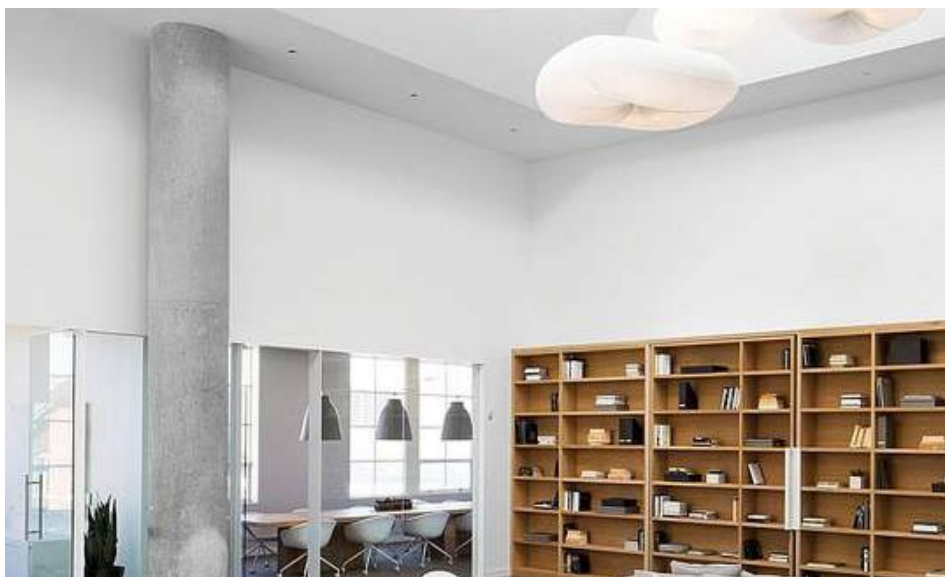
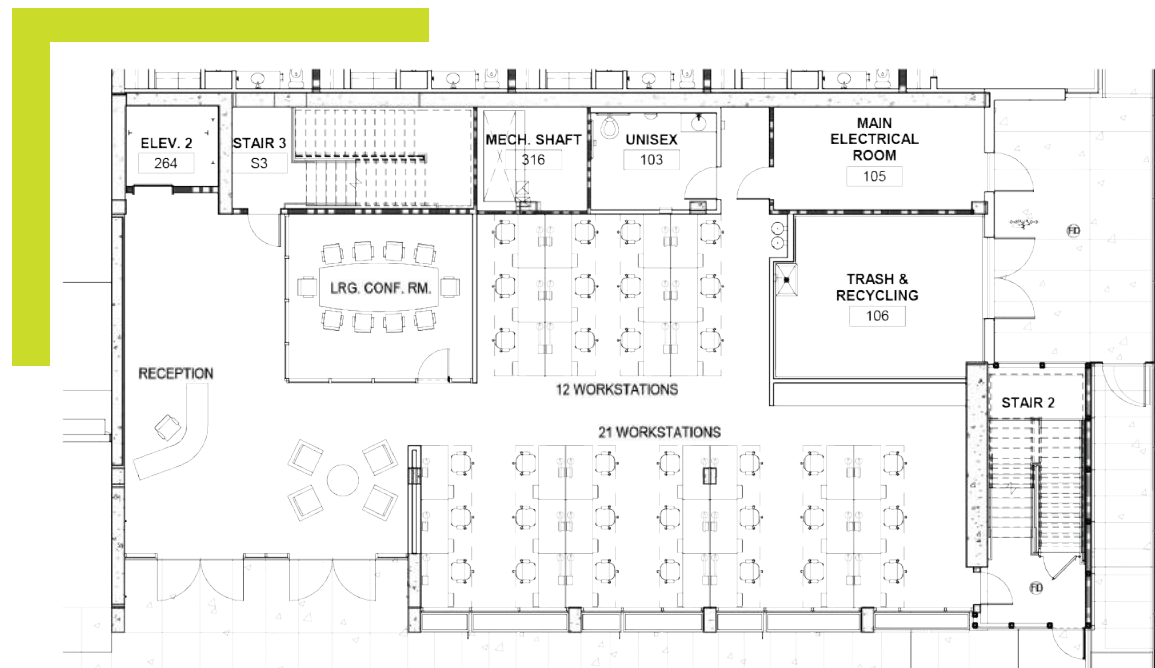


THE SPACE FOR SUCCESS

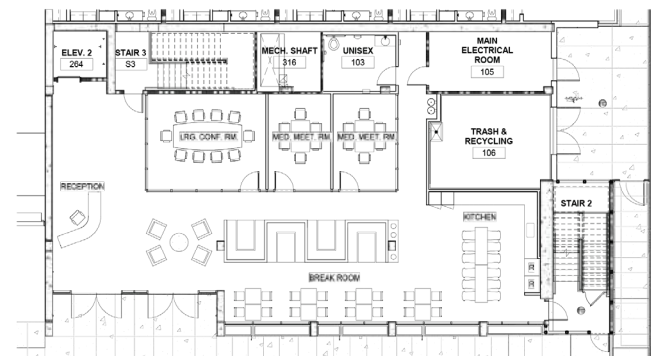
FLOOR ONE

±3,784 SF

33 WORKSTATIONS
1 CONFERENCE ROOM
RECEPTION AREA

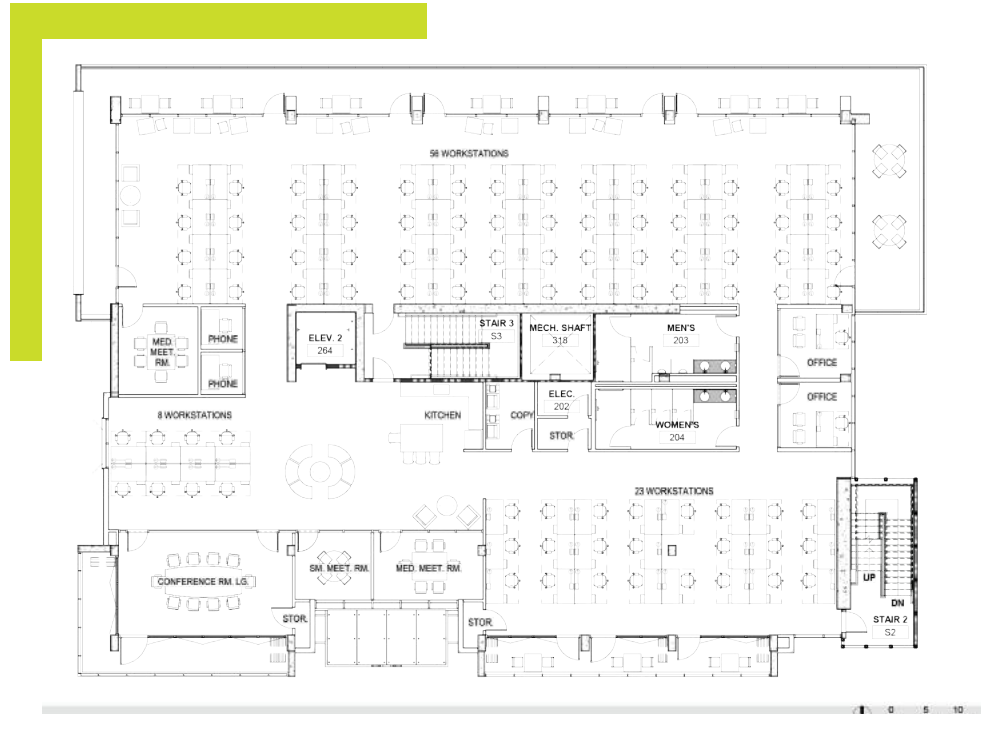


BREAK ROOM



FLOOR TWO

±13,029 SF



87 WORKSTATIONS
2 OFFICES
4 CONFERENCE ROOMS
2 PHONE BOOTHS
1 KITCHEN



FLOOR THREE

±8,606 SF



52 WORKSTATIONS
3 OFFICES
3 PHONE BOOTHS
1 KITCHEN



DWNTWN LUXURY LIVING

SIXE
50LIVE



**1-4 BEDROOM APARTMENT HOMES
AVAILABLE JAN 2020**

**SIX
50
LIVE**

SIX50LIVE.COM

TOUR THE LATEST IN MENLO PARK

DEVELOPMENT
THE MINKOFF GROUP

ARCHITECT
BRICK



DAVID HIEBERT LIC #01189320
MANAGING PRINCIPAL
650.320.0250
DAVID.HIEBERT@CUSHWAKE.COM

DAN PERSYN LIC #01184798
EXECUTIVE MANAGING DIRECTOR
650.320.0255
DAN.PERSYN@CUSHWAKE.COM

DAVID DOVE LIC #01035766
DIRECTOR
650.320.0212
DAVID.DOVE@CUSHWAKE.COM